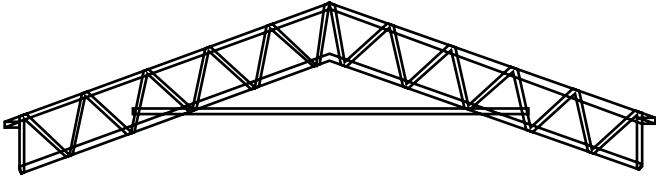


POLE BARNNS



Certified Trusses

Trusses are made from 2"x2" angle, 3/16" thick.



Pole Barn Kits

*Available Upon Request

Prices Include:

- Delivery and Installation
- Certified Trusses
- 29 Ga. Metal (40-year Paint Warranty)
- 6 x 6 Post
- 2 x 6 Roof Purlins
- Deluxe Trim Package
- Hardware and Screws



www.rbbuildings.com

STEP 1: SIZE & HEIGHT

KIT ONLY - for delivery and installation prices, please refer to STEP FOUR.

Labor not included, please refer to STEP FOUR.

10' On Center Sizes

Includes standard 18" overhang.

SIZE	20'	30'	40'	50'	60'	70'	80'	90'
20'	\$3,093	\$4,094	\$5,230	\$6,235	\$7,258	\$8,375	\$9,399	\$10,403
24'	\$4,267	\$5,678	\$7,223	\$8,630	\$10,044	\$11,567	\$12,975	\$14,385
30'	\$4,830	\$6,383	\$8,084	\$9,638	\$11,196	\$12,898	\$14,489	\$16,043
36'	\$5,856	\$7,744	\$9,841	\$11,729	\$13,655	\$15,752	\$17,678	\$19,566
40'	\$6,185	\$8,189	\$10,461	\$12,470	\$14,517	\$16,751	\$18,798	\$20,806
50' *	\$8,534	\$11,355	\$14,445	\$17,261	\$20,087	\$23,134	\$25,949	\$28,770

*Must be on 8"x 8" Posts

12' On Center Sizes

Includes standard 18" overhang.

SIZE	24'	36'	48'	60'	72'	84'	96'	108'
20'	\$3,351	\$4,481	\$5,637	\$6,775	\$7,942	\$9,061	\$10,211	\$11,350
24'	\$4,528	\$6,004	\$7,492	\$9,056	\$10,565	\$12,058	\$13,606	\$15,099
30'	\$5,214	\$6,965	\$8,694	\$10,505	\$12,256	\$14,023	\$15,812	\$17,546
36'	\$6,295	\$8,452	\$10,587	\$12,722	\$14,917	\$17,019	\$19,185	\$21,311
40'	\$6,701	\$8,963	\$11,273	\$13,551	\$15,883	\$18,123	\$20,422	\$22,700

6 x 6 Post Height

For sizes over 18' tall, please call us for an estimate.

SIZE	20' / 24'	30' / 36'	40' / 48'	50' / 60'	60' / 72'	70' / 84'	80' / 96'	90' / 108'
10'	Incl.	Incl.	Incl.	Incl.	Incl.	Incl.	Incl.	Incl.
12'	\$182	\$243	\$304	\$366	\$427	\$487	\$548	\$609
14'	\$599	\$798	\$998	\$1,197	\$1,397	\$1,595	\$1,795	\$1,995
16'	\$883	\$1,178	\$1,472	\$1,767	\$2,061	\$2,355	\$2,650	\$2,944
18'	\$1,168	\$1,558	\$1,946	\$2,337	\$2,725	\$3,115	\$3,504	\$3,894

8 x 8 Post Height

For sizes over 18' tall, please call us for an estimate.

SIZE	20' / 24'	30' / 36'	40' / 48'	50' / 60'	60' / 72'	70' / 84'	80' / 96'	90' / 108'
10'	\$1,239	\$1,651	\$2,064	\$2,477	\$2,890	\$3,302	\$3,715	\$4,129
12'	\$1,304	\$1,740	\$2,174	\$2,610	\$3,044	\$3,480	\$3,914	\$4,349
14'	\$1,810	\$2,413	\$3,017	\$3,620	\$4,223	\$4,827	\$5,430	\$6,033
16'	\$2,035	\$2,713	\$3,392	\$4,070	\$4,749	\$5,428	\$6,105	\$6,784
18'	\$2,260	\$3,014	\$3,768	\$4,521	\$5,274	\$6,028	\$6,781	\$7,535

STEP 2: SIDES & ENDS

Labor not included, please refer to STEP FOUR.

Side Walls for 10' on Center

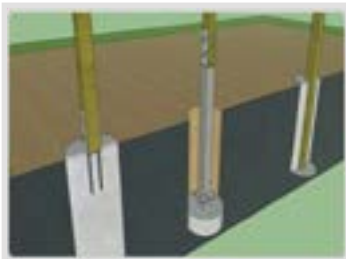
Price is for both sides unless otherwise noted.

LENGTH>	20'	30'	40'	50'	60'	70'	80'	90'
Single Side Panel	\$387	\$558	\$721	\$888	\$1,059	\$1,227	\$1,408	\$1,575
10'	\$1,193	\$1,647	\$2,176	\$2,668	\$3,159	\$3,684	\$4,176	\$4,710
12'	\$1,336	\$1,890	\$2,453	\$3,045	\$3,598	\$4,157	\$4,753	\$5,350
14'	\$1,484	\$2,095	\$2,759	\$3,422	\$4,004	\$4,668	\$5,331	\$5,985
16'	\$1,627	\$2,300	\$3,035	\$3,770	\$4,443	\$5,178	\$5,908	\$6,624
18'	\$1,804	\$2,544	\$3,346	\$4,147	\$4,882	\$5,684	\$6,486	\$7,264

Side Walls for 12' on Center

Price is for both sides unless otherwise noted.

LENGTH>	24'	36'	48'	60'	72'	84'	96'	108'
Single Side Panel	\$387	\$558	\$721	\$888	\$1,059	\$1,227	\$1,408	\$1,575
10'	\$1,374	\$1,985	\$2,534	\$3,116	\$3,770	\$4,319	\$4,968	\$5,550
12'	\$1,542	\$2,229	\$2,887	\$3,551	\$4,248	\$4,911	\$5,636	\$6,300
14'	\$1,704	\$2,472	\$3,212	\$3,952	\$4,758	\$5,498	\$6,309	\$6,381
16'	\$1,904	\$2,749	\$3,565	\$4,386	\$5,274	\$6,090	\$6,977	\$7,793
18'	\$2,066	\$2,988	\$3,890	\$4,820	\$5,784	\$6,682	\$7,646	\$8,543



Installation options

End Walls

Price is for both ends unless otherwise noted.

WIDTH>	20'	24'	30'	36'	40'	50'
Single Gable	\$764	\$955	\$1,145	\$1,336	\$1,527	\$1,909
10'	\$3,093	\$3,341	\$4,372	\$5,154	\$6,147	\$8,046
12'	\$3,417	\$3,684	\$4,811	\$5,727	\$6,891	\$8,896
14'	\$3,999	\$4,276	\$5,632	\$6,624	\$7,254	\$10,204
16'	\$4,381	\$4,658	\$6,242	\$7,254	\$8,791	\$11,511
18'	\$4,877	\$5,947	\$8,991	\$11,922	\$14,298	\$21,400

*Shelf Girts, add 10% on wall subtotal.

*Our standard construction is posts on 6" concrete pad back filled with dirt.

Delivery and Installation Included

Included for the first 50 miles, any mile after 50 is \$2.50 per mile.

STEP 3: LEAN-TOS

All prices are for one lean-to attached to a new or existing R&B Pole Barn.

Labor not included, please refer to STEP FOUR.

10' On Center Sizes

SIZE	20'	30'	40'	50'	60'	70'	80'	90'
10'	\$1,546	\$2,047	\$2,615	\$3,117	\$3,629	\$4,188	\$4,699	\$5,202
12'	\$2,134	\$2,839	\$3,611	\$4,315	\$5,022	\$5,783	\$6,487	\$7,193
14'	\$2,415	\$3,191	\$4,042	\$4,819	\$5,598	\$6,449	\$7,245	\$8,021
16'	\$2,928	\$3,872	\$4,920	\$5,864	\$6,828	\$7,876	\$8,839	\$9,783
20'	\$3,093	\$4,094	\$5,230	\$6,235	\$7,258	\$8,375	\$9,399	\$10,403
24'	\$4,267	\$5,678	\$7,223	\$8,630	\$10,044	\$11,567	\$12,975	\$14,385
30'	\$4,830	\$6,383	\$8,084	\$9,638	\$11,196	\$12,898	\$14,489	\$16,043

12' On Center Sizes

SIZE	24'	36'	48'	60'	72'	84'	96'	108'
10'	\$1,675	\$2,241	\$2,818	\$3,388	\$3,971	\$4,531	\$5,106	\$5,675
12'	\$2,264	\$3,002	\$3,746	\$4,528	\$5,283	\$6,029	\$6,803	\$7,549
14'	\$2,607	\$3,482	\$4,347	\$5,252	\$6,128	\$7,011	\$7,906	\$8,773
16'	\$3,148	\$4,226	\$5,294	\$6,361	\$7,459	\$8,510	\$9,593	\$10,656
20'	\$3,351	\$4,481	\$5,637	\$6,775	\$7,942	\$9,061	\$10,211	\$11,350

6 x 6 Post Height

SIZE	20' / 24'	30' / 36'	40' / 48'	50' / 60'	60' / 72'	70' / 84'	80' / 96'	90' / 108'
10'	Incl.	Incl.	Incl.	Incl.	Incl.	Incl.	Incl.	Incl.
12'	\$91	\$122	\$152	\$183	\$214	\$244	\$274	\$305
14'	\$300	\$399	\$499	\$599	\$699	\$798	\$898	\$998
16'	\$442	\$589	\$736	\$884	\$1,031	\$1,178	\$1,325	\$1,472

8 x 8 Post Height

SIZE	20' / 24'	30' / 36'	40' / 48'	50' / 60'	60' / 72'	70' / 84'	80' / 96'	90' / 108'
10'	\$620	\$826	\$1,032	\$1,239	\$1,445	\$1,651	\$1,858	\$2,065
12'	\$652	\$870	\$1,087	\$1,305	\$1,522	\$1,740	\$1,957	\$2,175
14'	\$905	\$1,207	\$1,509	\$1,810	\$2,112	\$2,414	\$2,715	\$3,017
16'	\$1,018	\$1,357	\$1,696	\$2,035	\$2,375	\$2,714	\$3,053	\$3,392

Please refer to STEP TWO for prices on closing in sides and ends.

STEP 4: DOORS AND OPTIONS

WALK-IN DOORS

36" Steel 6 Panel \$425

WINDOWS

36" x 48" \$279

36" x 60" \$312

ADDITIONAL OPTIONS

Framed Opening	\$178
Drip Stop	\$0.69 / sq. ft.
Posts In Ground	\$0 / post
Posts On Concrete With Sturdi-Brackets	\$105 / post
Posts In Concrete Backfilled With Concrete	\$94 / post
Dutch Openings	\$29 each
Skylights	\$144 each
Wainscoting	\$1.50 / sq. ft.
3" MBI Vinyl Insulation Requires 26 Gauge Upgrade	\$2.01 / sq. ft.
rFoil Insulation	\$1.15 / sq. ft.
Interior Paneling	\$1.50 / sq. ft.
26 Ga. 40-year Panel Color Matching Screws Included	15%
Bar Joists - 20'	\$575
Bar Joists - 24'	\$719
Site Specific Drawings	\$1,250
Pitch Change	20%
House Wrap *walls only	\$0.94 / sq. ft.

Price before any doors and windows

LABOR RATES

Delivery & Installation	+46%
Delivery Only *No Installation	+3%
Pick Up At Manufacturer *No Delivery or Installation	Base Price

Perma Columns

Perma Columns are five foot precast columns that keep your wood out of the ground, ensuring your building's foundation will never rot.

ROLL-UP DOORS

5' x 7' \$618

8' x 8' \$864

9' x 8' \$911

10' x 8' \$970

10' x 10' \$1,172

OVERSIZED ROLL-UP DOORS

10' x 10' \$1,630

10' x 12' \$1,830

12' x 10' \$1,770

12' x 12' \$2,137

16' x 8' \$2,186

16' x 10' \$2,520

16' x 12' \$2,864

SINGLE-SLIDING DOORS

10' x 10' \$1,174

10' x 12' \$1,373

10' x 14' \$1,452

10' x 16' \$1,495

12' x 10' \$1,144

12' x 12' \$1,343

12' x 14' \$1,422

12' x 16' \$1,498

14' x 10' \$1,270

14' x 12' \$1,480

14' x 14' \$1,570

14' x 16' \$1,639

Split Slide Add \$480

ROLL-UP DOOR OPTIONS

Motor + Remote \$621

Extra Remote \$26



Roll-Up Door



Walk-In Door



Window



Sturdi Brackets

Sturdi-Wall Brackets are a heavy duty anchor system designed to connect post frame structures to concrete foundations



COLOR OPTIONS

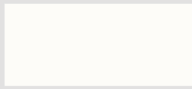
Your choice of up to **THREE COLORS** for your roof, wall, and trim!

Standard Colors

We offer a variety of color options for your Pole Barn Structure!



BLACK



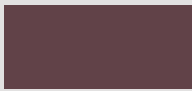
WHITE



LIGHT GRAY



TAUPE



BERRY



RUSTIC RED



IVY GREEN



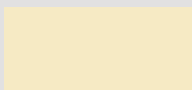
CHARCOAL



COCOA BROWN



SADDLE TAN



IVORY



HAWAIIAN BLUE



BUCKSKIN



BURNISHED SLATE



GALLERY BLUE



EVERGREEN



DARK RED



LIGHT STONE



GALVALUME

Colors shown are approximate and may vary slightly from painted metal.



Financing Available

Rates as low as 9.99% with financing up to 72 months! Restrictions may apply.

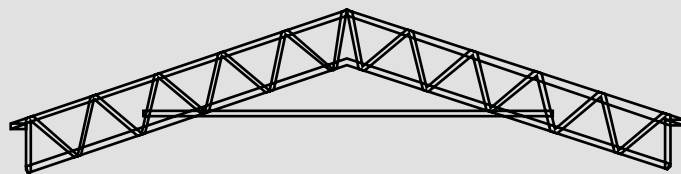
GALLERY



Trusses Come Standard With:

- 4/12 Pitch
- 1/12 Lean-to pitch
- 18" Overhang
- Bolts for Installation

Trusses are made from 2"x2" angle, 3/16" thick.



Additional Options Available

Contact us for further information on Weathervanes, Cupolas, and Certified Trusses.



GET COVERED.



Call for custom structures or dealer inquiries
by dialing 770-715-0862

979 Highway 42 South Jackson, Georgia 30233 - Family Owned Since 2003